

Third Sector Interfaces

Cumbernauld, November 2011

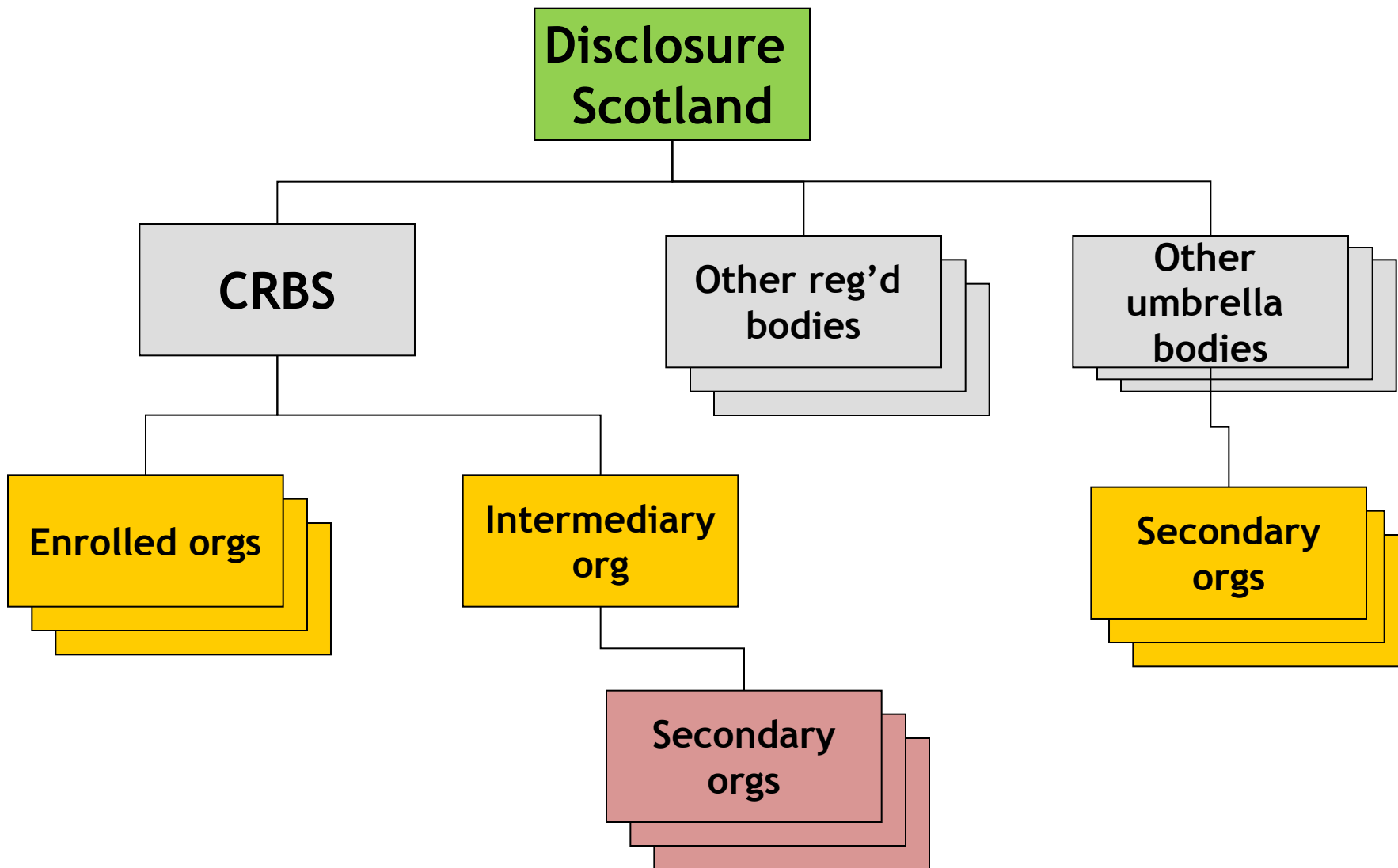
PVG

Ian Whiteford

Central Registered Body Scotland

01786 849777

iwhiteford@crbs.org.uk



Agenda

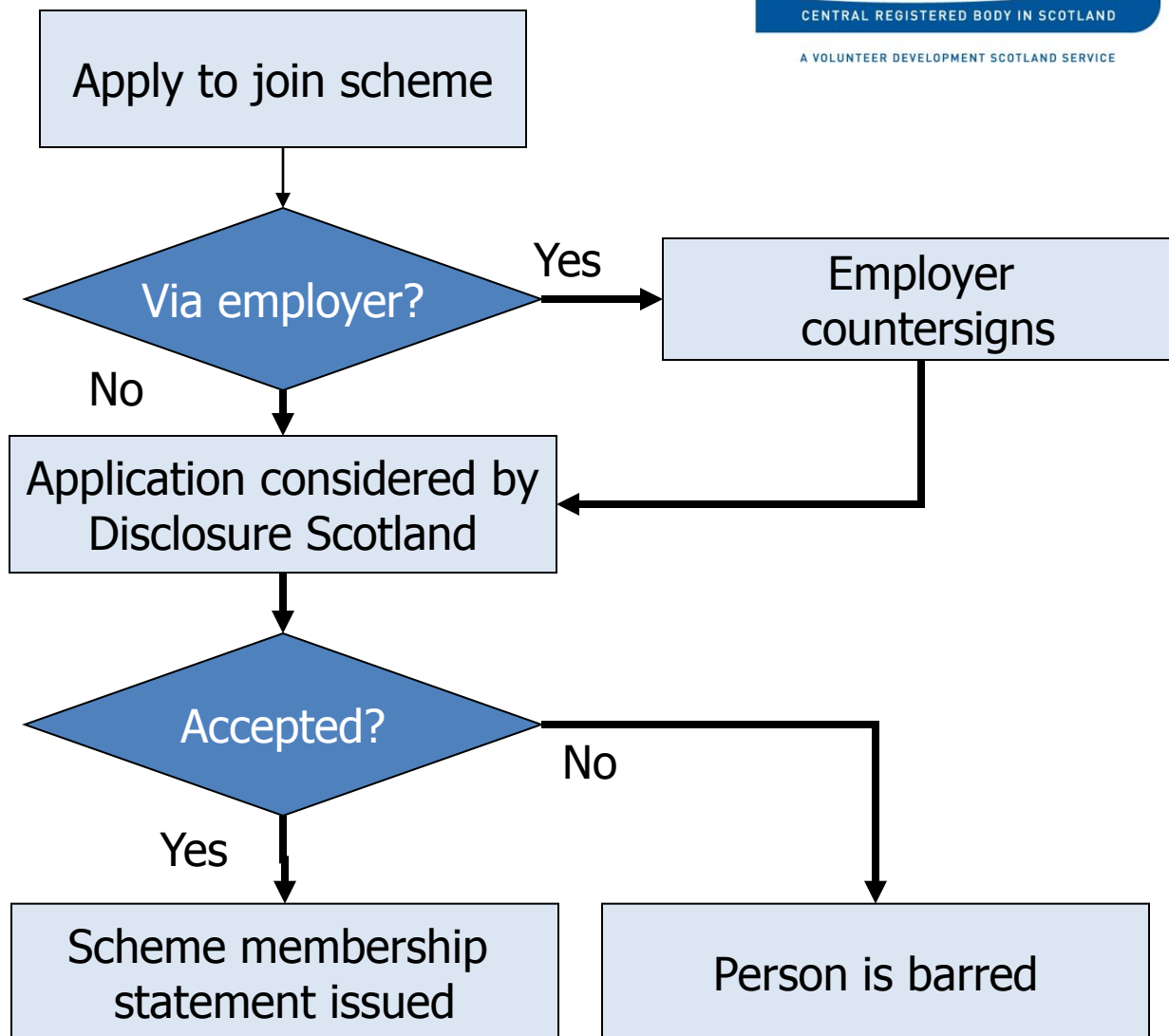
- introduction to PVG
- regulated work
- children
- protected adults
- services
- defining and assessing regulated work
- practical points

Missing from agenda

- Forms
- Certificates
- Listing and barring
- Referrals

Introduction to PVG

- Applies to work, paid or unpaid
- Establishes “regulated workforce”, members of Scheme
- Children / adults / both
- Disclosure Scotland manages the Scheme



Work

Work IS

- Paid and unpaid work
- Arranged by someone / an organisation

Work IS NOT

- Paid or unpaid work done for family members
- Unpaid work done in the context of a personal relationship
- Membership of mutual support groups

Regulated work

- Is defined in the PVG legislation
- Is with children or protected adults
- Arranged by someone / an organisation

It is an offence to

- Do regulated work if you are on the relevant LIST
- Offer regulated work to someone on the relevant LIST

Regulated work

- Involves “normal duties”
- Is NOT “incidental”

Children

- Similar to POCSA
- Exclusions for children working
- Some differences

Protected adult

- Is aged 16 or over
- Is in receipt of a service

“Service-based” definition

Services

- Care
- Community Care
- Health
- Welfare

Care service

Regulated by Care Inspectorate

Support service

Adult placement service

Care home service

Housing support service

Community care service

Social work and mental health services provided or secured
by a council

OR

Self-directed support paid for by a council

Health service

Provided or secured by a public health body

Concerning the treatment, care and support of and provision of advice and assistance to individuals in relation to health and well-being

OR similar services provided by an independent health care service provider

Welfare service

Provides support, assistance, advice or counselling to individuals with particular needs

a specific requirement an individual may have arising from either
physical or mental illness, or

physical or mental disability

which may disadvantage that person when compared to the rest of society

Welfare service

Must meet all 5 conditions:

1. Is provided in the course of work
2. Is provided on behalf of an organisation
3. Requires training to be undertaken by the person delivering
4. Has a frequency and formality attached to the service
5. Requires a contract to be agreed in advance OR
is personalised to an individual adult's needs

Receiving services

Note that an organisation may be working with protected adults because they are in receipt of a qualifying service from another organisation, e.g.

Providing transport to care home residents

Providing support to people in receipt of health services

Regulated work

- normal duties include carrying out particular activities
- normal duties include work in a particular establishment (with opportunity for unsupervised contact)
- particular positions (including charity trustees)
- normal duties include the day to day supervision of an individual doing regulated work

Assessment of regulated work

- Is it work?
- Who are they working with?
- What do they do?
- Is it their normal duties?
- Are there any exceptions which apply?

Practical points

- Scrutiny
- Free checks
- Retrospective checking
- IT

Resources

- Guidance document (Disclosure Scotland website)
- CRBS – phone and email
- CRBS website
- Free live training at Stirling (PVG & signatory)
- Interactive “webinars” (training delivered over the internet)

The Central Registered Body in Scotland (CRBS)

Tel: 01786 849777
Fax: 01786 849767
Email: pvg@crbs.org.uk
Website: www.crbs.org.uk